



PROPOSED TOWER

(G +4 PARKING+14TYP.+H.C.)

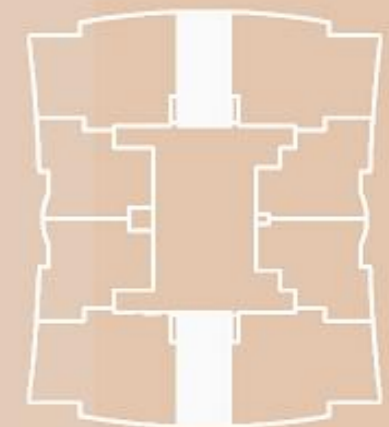
FOR

CBI TOWER-B

ALMARMOOKA CITY

PLOT NO. (MA56)

(6TH-18TH) TYPICAL FLR. PLAN



GROSS AREA (SQ.M.)

TYPE (C1) X2 STU. = 44.25 SQ.M.

TYPE C1

STUDIO



Eng. ADNAN SAFFARINI

Design, Supervision & Consultants



PROPOSED TOWER

(G +4 PARKING+14TYP.+H.C.)

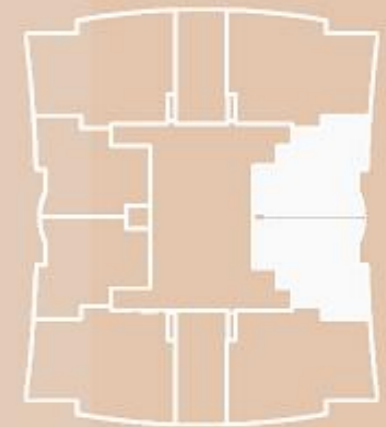
FOR

CBI TOWER-B

ALMARMOOKA CITY

PLOT NO. (MA56)

(6TH-18TH) TYPICAL FLR. PLAN



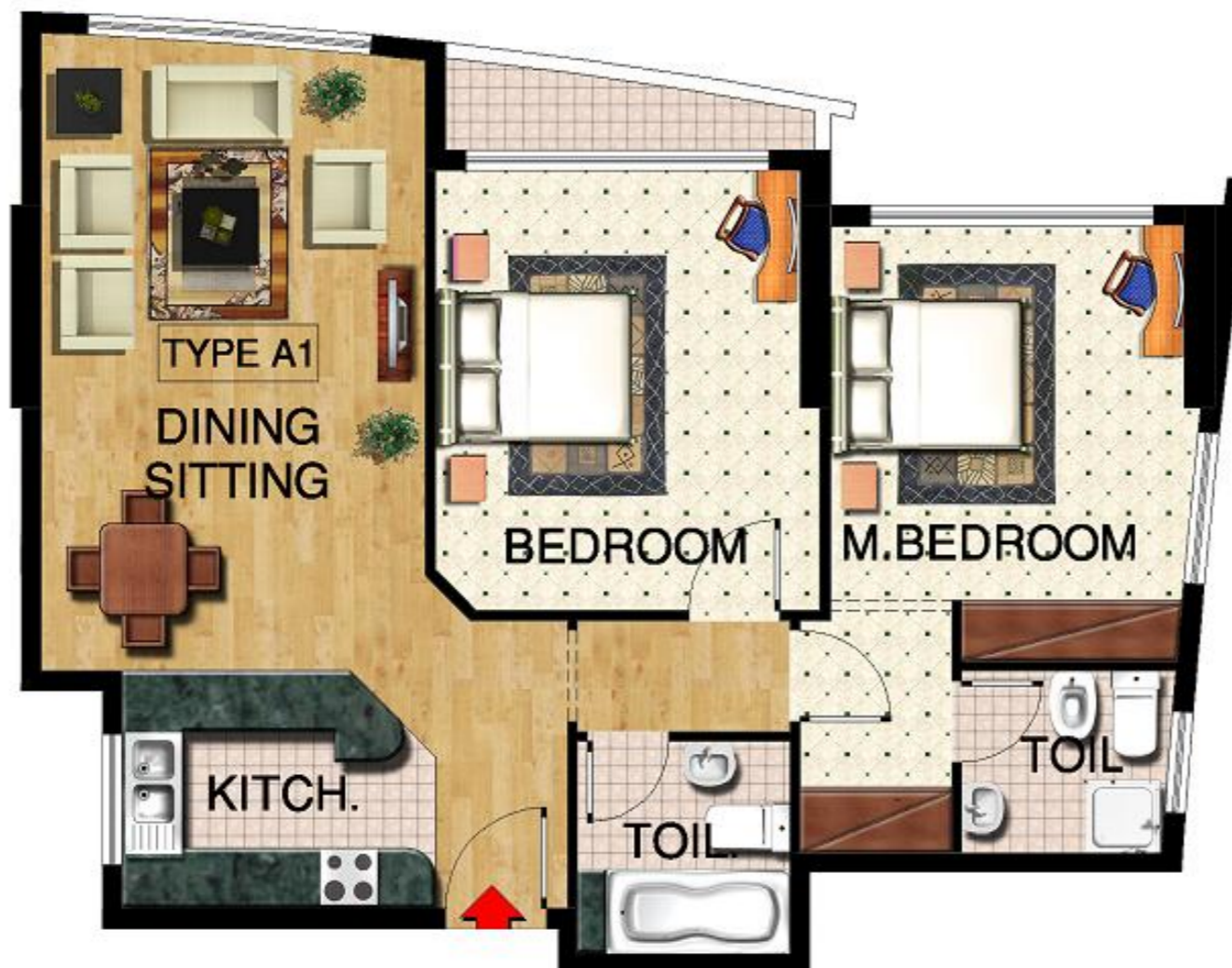
GROSS AREA (SQ.M.)
 TYPE (B4)X2 1B.R. = 71.25 SQ.M.

TYPE B4

1 BEDROOM



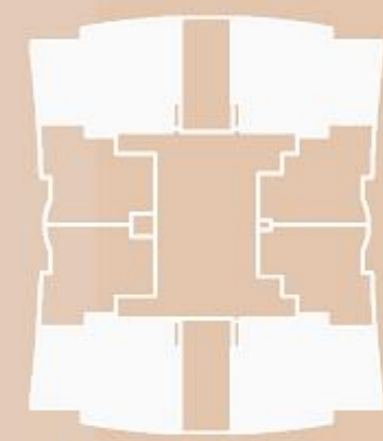
Eng. ADNAN SAFFARINI
 Design, Supervision & Consultants



PROPOSED TOWER
 (G +4 PARKING+14TYP.+H.C.)
 FOR
CBI TOWER-B
ALMARMOOKA CITY

PLOT NO. (MA56)

(6TH-18TH) TYPICAL FLR. PLAN



GROSS AREA (SQ.M.)
 TYPE (A1)X4 2B.R. = 113.00 SQ.M.

TYPE A1
2 BEDROOM



Eng. ADNAN SAFFARINI
 Design, Supervision & Consultants



PROPOSED TOWER

(G +4 PARKING+14TYP.+H.C.)

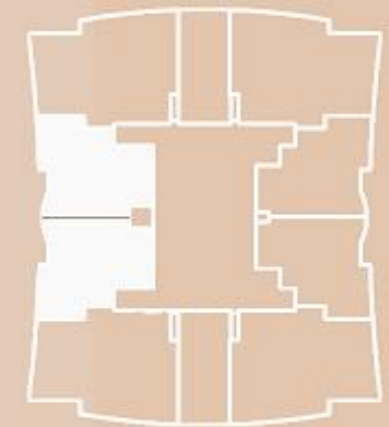
FOR

CBI TOWER-B

ALMARMOOKA CITY

PLOT NO. (MA56)

(6TH-18TH) TYPICAL FLR. PLAN



GROSS AREA (SQ.M.)
 TYPE (B3)X2 1B.R. = 73.25 SQ.M.

TYPE B3

1 BEDROOM



Eng. ADNAN SAFFARINI
 Design, Supervision & Consultants



PROPOSED TOWER

(G +4 PARKING+14TYP.+H.C.)

FOR

CBI TOWER-B

ALMARMOOKA CITY

PLOT NO. (MA56)

(6TH-18TH) TYPICAL FLR. PLAN

FLATS NO.

- NO. OF FLATS = 10 / TYPICAL.
- TOTAL NO. OF FLATS 14 FLOORS = 140
- 2 BEDROOM FLATS = 04 NOS.
- 1 BEDROOM FLATS = 04 NOS.
- STUDIO FLATS = 02 NOS.

GROSS AREA (SQ.M.)

- TYPE (A1)X4 2B.R. = 113.00 SQ.M.
- TYPE (B3)X2 1B.R. = 73.25 SQ.M.
- TYPE (B4)X2 1B.R. = 71.25 SQ.M.
- TYPE (C1)X2 STU. = 44.25 SQ.M.

SERVICES AREA = 151.00 SQ.M.



Eng. ADNAN SAFFARINI
Design, Supervision & Consultants